

# ANTI-STATIC BARS

## 1255 STATIC ELIMINATORS

The 1255 Bar is a version of the best selling 1250-S Bar, but with a detachable cable.

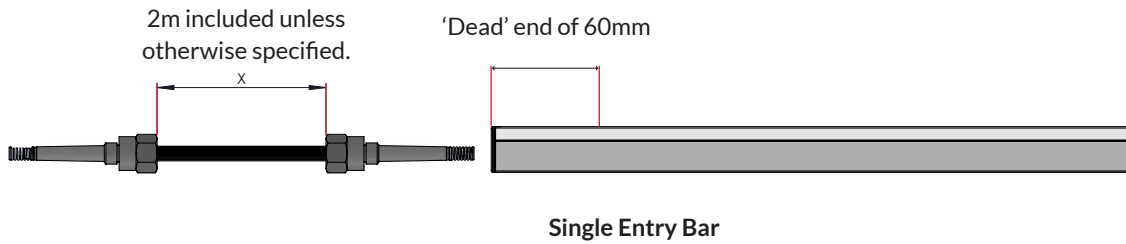
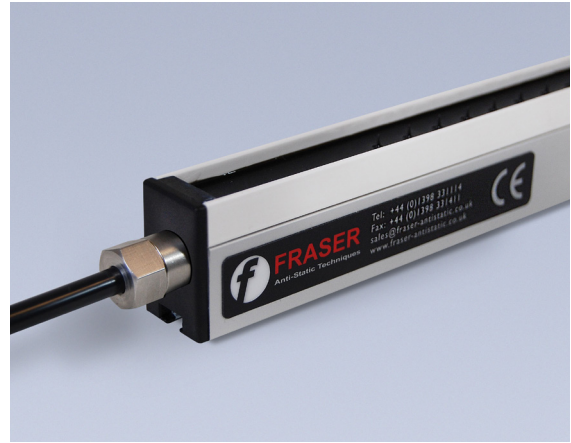
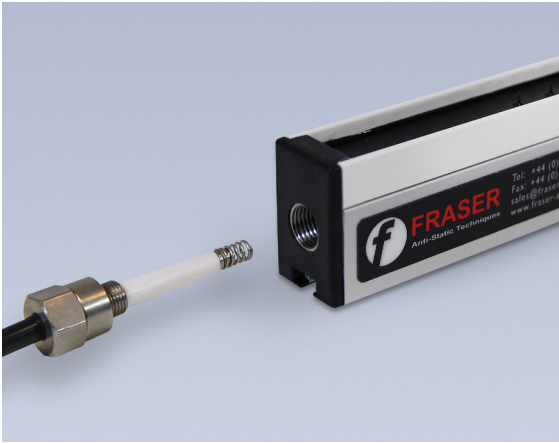
Please see [1250-S Datasheet](#) for details of applications and specification.

- > The 1255 Bar is designed for applications where there is a requirement for the HT cable to be detached from the Bar. Typically this may be because the application risks damaging the cable.
- > The price of the 1255 Bar includes a 2m long double-ended cable. Longer cable lengths can be specified.
- > The high voltage from the Power Unit must be turned off before disconnecting the cable.
- > NB. The 1255 variant is not covered by the UL certification of the 1250-S Bar.

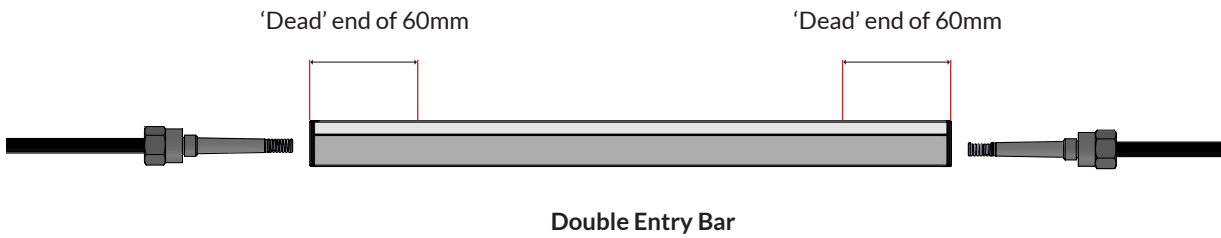


### Specification

<b>Length:</b>	From 180mm to 6m for single entry and 200 to 6m for double entry.
<b>Construction:</b>	Anodised aluminium, epoxy resin, PVC and hardened etched emitters.
<b>Cable:</b>	Hi-Flex PVC, 30kV screened cable with 70mm bend radius. Standard length is 2m - longer lengths can be specified at time of order, (subject to maximum load on power unit), 90° cable exit option. Bars may be supplied in series - joined by cable.
<b>Power Unit:</b>	Use with Fraser 5.5kV & 6kV Power Units - see datasheets.
<b>Safety:</b>	5mA maximum current from Power Unit. High voltage resistance inside bars further limits current below 50µA.
<b>Mounting:</b>	See sketches to show 1250 and 1250-S options. 200mm x 20mm steel fixing strips are supplied with each bar.
<b>Environment:</b>	60° maximum temperature. 70% rH non-condensing max.
<b>Standards:</b>	CE.



It is possible to have Bars in series with a detachable connection at each end.



## Variants

- EX - ATEX:** For hazardous areas see EX-1250 datasheet.
- Airboost:** For extending the range up to 500mm, see 1250-AB Datasheet.
- Balanced:** For high tech applications where an accurate electrical ion balance is required.
- High Charge:** See Super 80 datasheet - considered by many to be the most powerful static eliminator bar of its type available.
- Combination:** A passive static discharger may be combined with a 1250, for speeds over 1000m/min.
- Series:** Bars supplied in series - joined by cable.